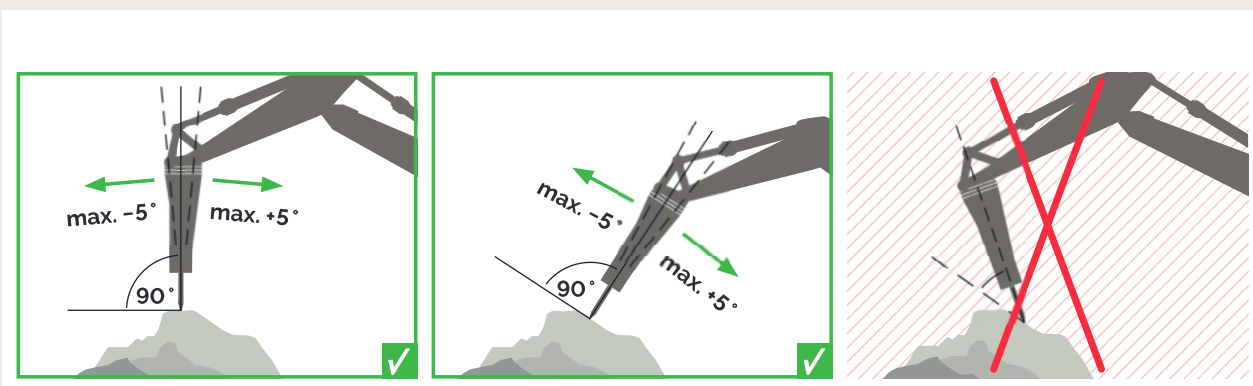
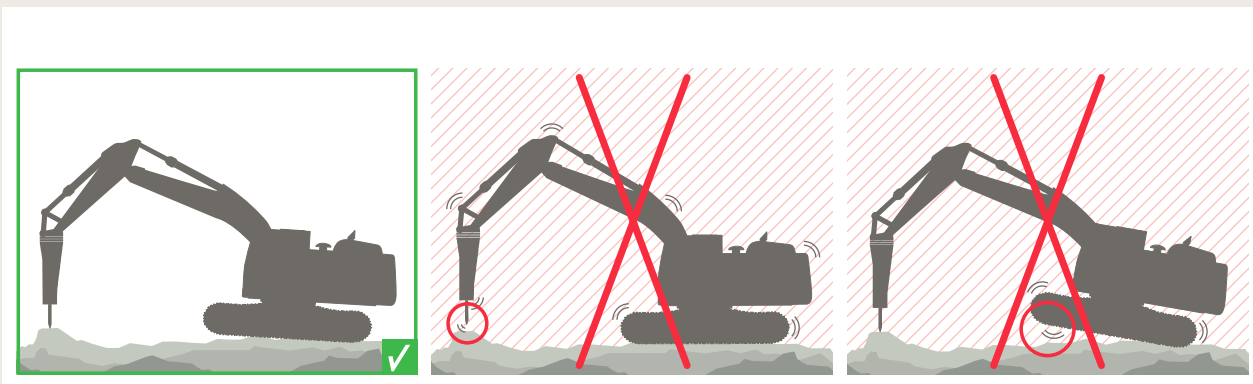
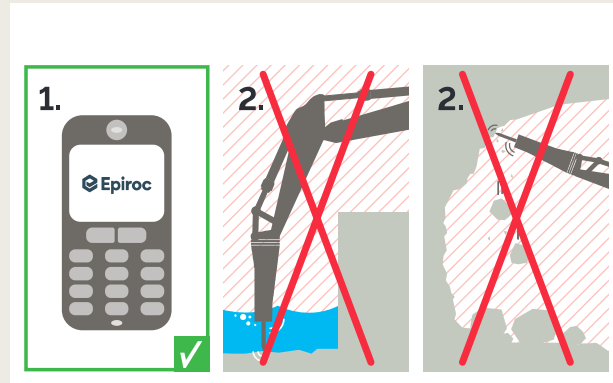
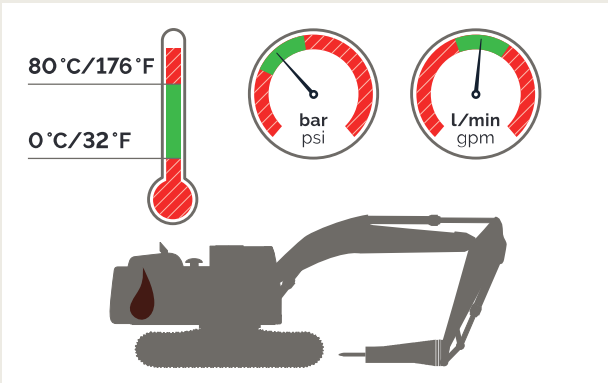


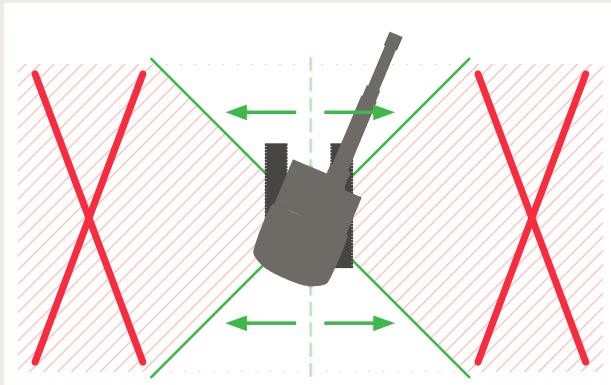
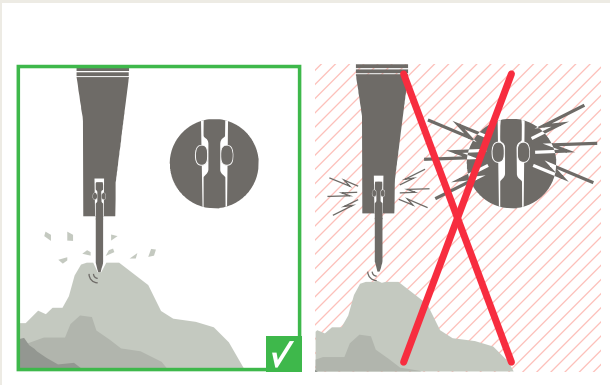
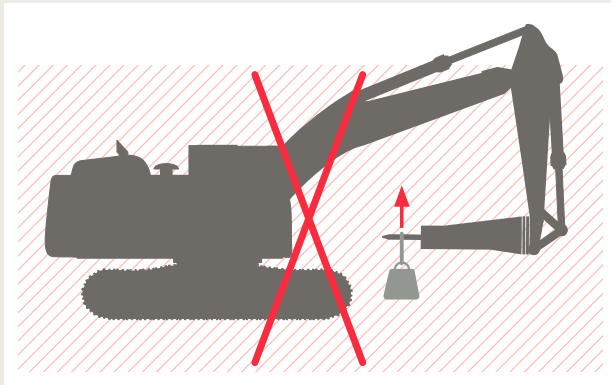
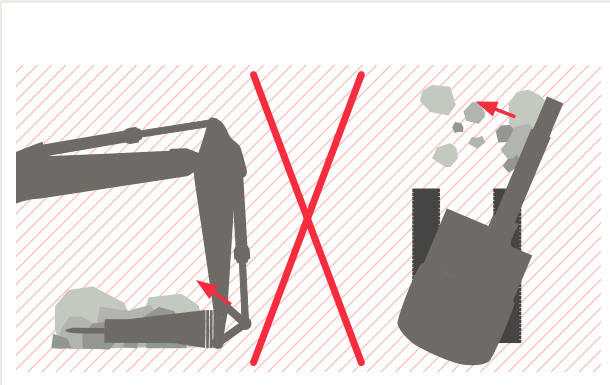
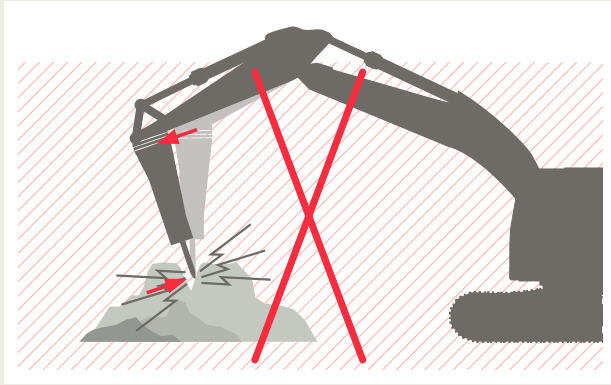
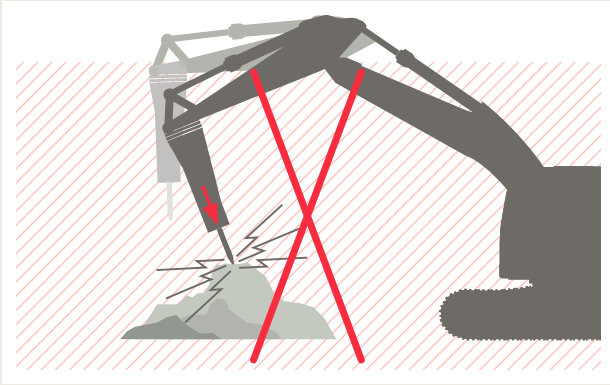
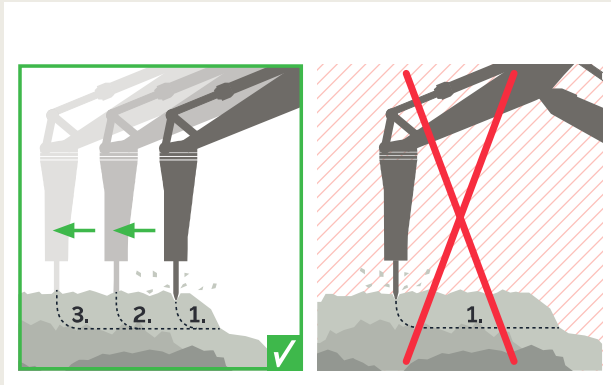
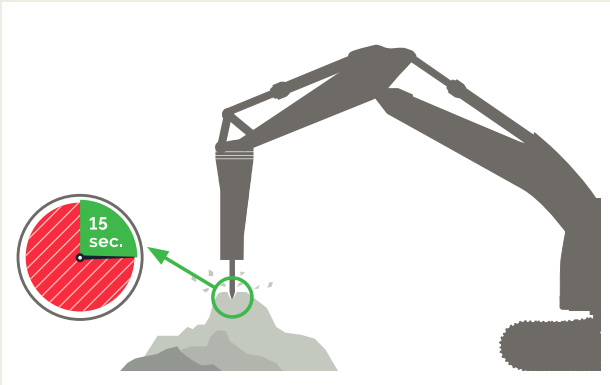


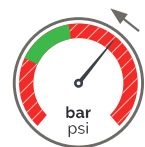
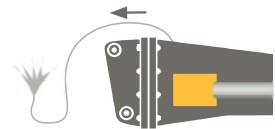
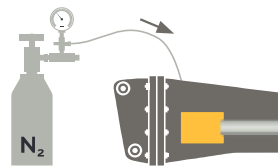
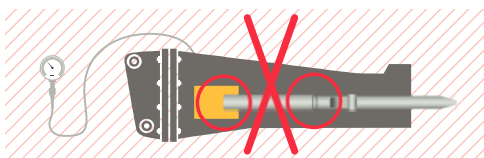
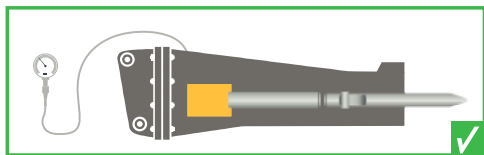
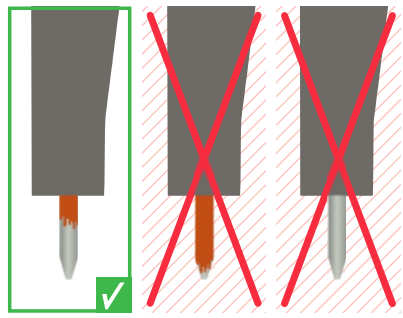
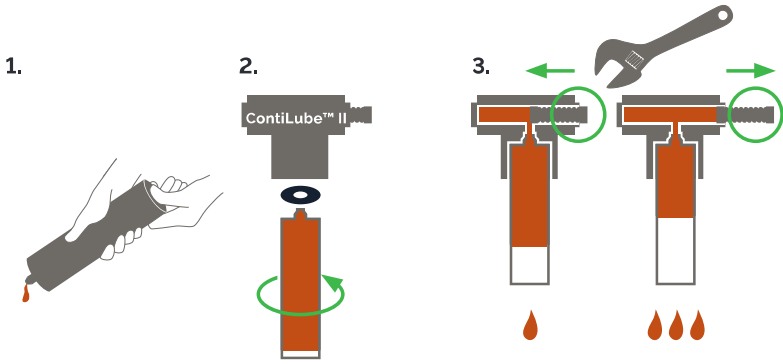
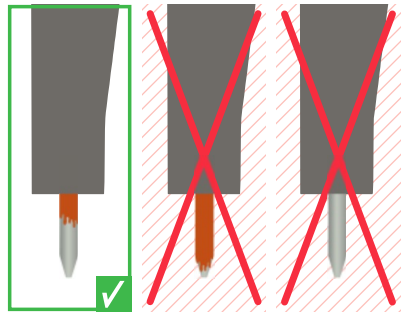
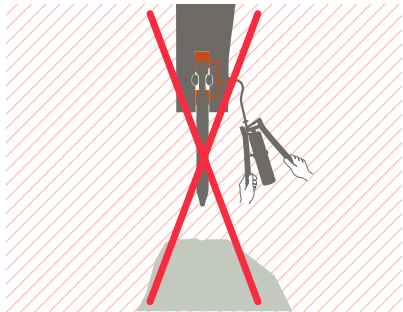
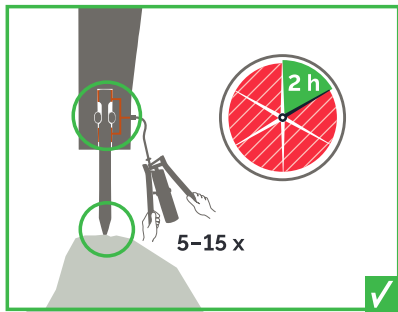
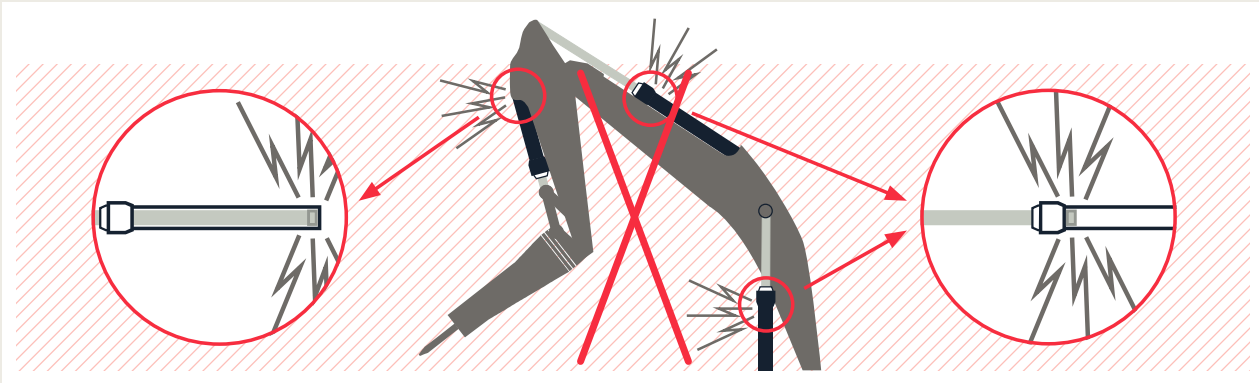
请注意!
 Please note!
 Tengan en cuenta por favor!
 Tome Atenção!
 Пожалуйста,
 обратите внимание!
 注意!

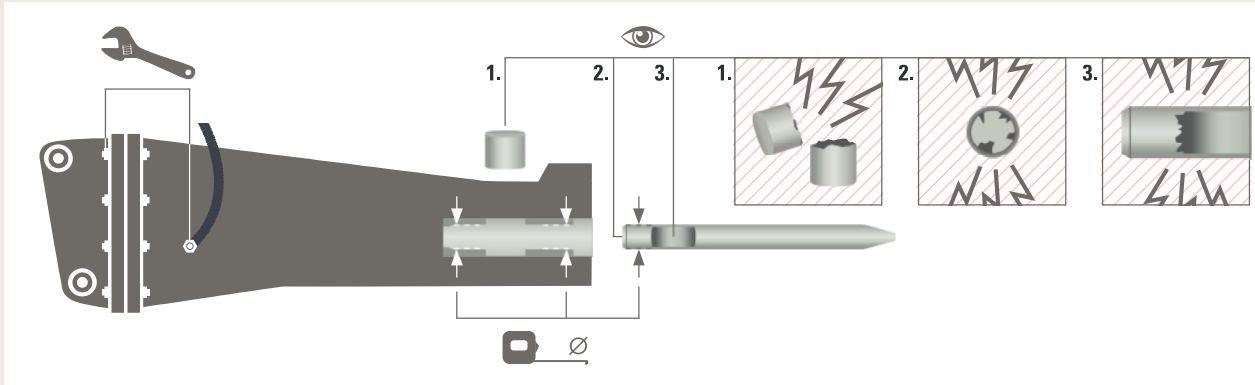
Bitte beachten!
 Prendre en attention s.v.p.!
 Lütfen Dikkat Edin!
 Fate attenzione per favore!
 Uwaga!
 Upozorněni!
 Vänligen notera!



United. Inspired.







Hydraulic Attachments



Breakers
0.7-140 t / 1,500-309,000 lbs



Bucket crushers
18-54 t / 39,500-119,000 lbs



Combi cutters
15-85 t / 33,000-187,000 lbs



Auger drive units
1-50 t / 2,000-110,000 lbs



Demolition pulverizers
18-35 t / 39,500-77,000 lbs



Grapples
0.7-100 t / 1,500-220,000 lbs



Bulk pulverizers
18-40 t / 39,500-88,000 lbs



Drum cutters
0.6-125 t / 1,300-275,000 lbs



Steel cutters
4-110 t / 9,000-243,000 lbs



Magnets
12-45 t / 26,500-99,000 lbs



Concrete busters
2-35 t / 4,500-77,000 lbs



Compactors
1-40 t / 2,000-88,000 lbs

3363 1182 73 - Copyright Construction Tools GmbH, Essen, Germany. We reserve the right to change specifications without notice. 10.2019

United. Inspired.

epiroc.com

