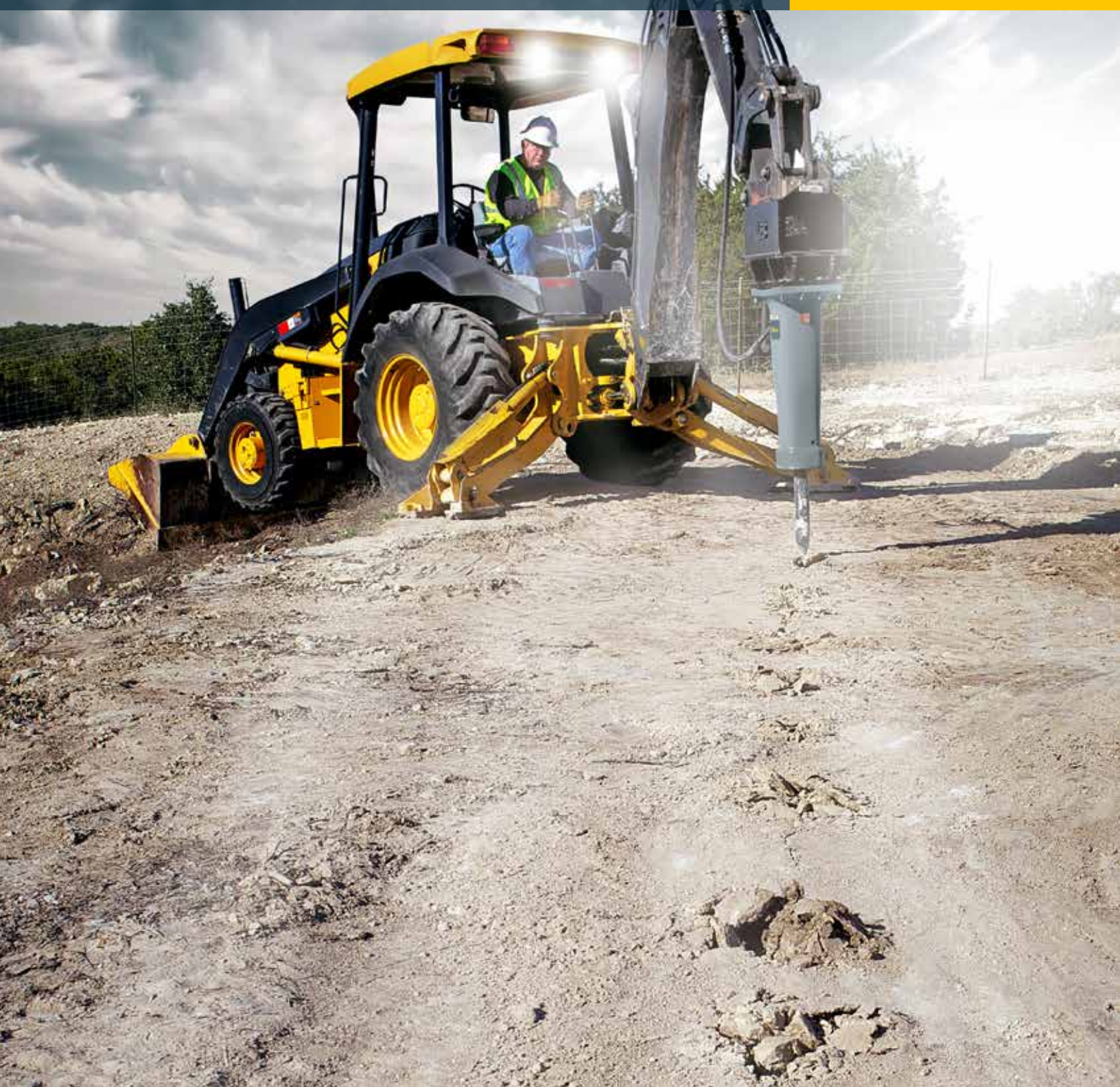


Excavator attachments

ES/EC Range Breakers and Hydraulic Compactors





Product overview

Meet our Hydraulic Attachment Tools.
Built with technology that makes them light,
compact and more powerful than ever.



HC
350-2,500 lbs



**Hydraulic
Compactors**
pages 4-5



EC
210-9,250 lbs



EC Range
pages 6-7



ES
470-830 lbs



ES Range
page 8

On solid ground

The Hydraulic Compactors are designed for effectively compacting soil in trenching, ground levelling, embankment construction, driving in and pulling out posts, sheet piling and other formworks.

Optional 360° endless **hydraulic rotation** allows optimal positioning and precise handling (HC 350 – 1050).

The integrated **flow and pressure control valve** prevents overloading.

Optional **backfill blades** for clearing and moving soil.

To improve force distribution and thus lessen the strain, the **outward shock mounts** are **tilted 15°**.

No need for manual greasing thanks to the **permanent oil splash lubrication**.

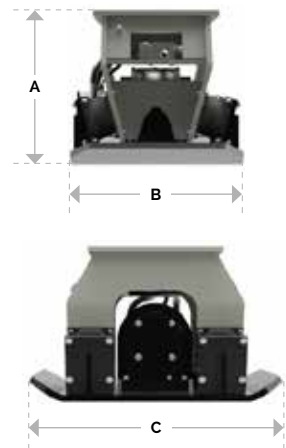


HC range		HC 150 ³⁾	HC 350 ³⁾	HC 450 ³⁾	HC 850 ³⁾	HC 1050 ³⁾
Static version						
Carrier weight class ¹⁾	lbs	2,000-6,500	6,500-17,500	9,000-20,000	20,000-44,000	44,000-88,000
Service weight ²⁾	lbs	350	710	950	1,950	2,500
Product weight	lbs	309	631	882	1,825	2,302
A	in	19.1	24.5	24.5	30.1	30.9
B	in	11.6	18.7	24.0	28.0	34.0
C	in	28.4	33.3	36.6	50.1	53.7
Rotating version						
Carrier weight class ¹⁾	lbs	-	9,000-17,500	11,000-20,000	20,000-44,000	44,000-88,000
Service weight ²⁾	lbs	-	970	1,210	2,350	3,100
Product weight	lbs	-	889	1,151	2,211	2,875
A	in	-	35.9	35.9	41.5	42.8
B	in	-	18.7	24.0	28.0	34.0
C	in	-	33.3	36.6	50.1	53.7
Static & rotating version						
Frequency	cpm	2,100	2,100	2,200	2,200	2,200
Force	lbs	3,080	5,080	7,935	16,095	23,155
Compaction coverage	ft ²	1.8	3.3	4.3	7.3	9.7
Oil flow rate	gpm	7.9	15.1	20.1	30.1	39.9
Maximum operating pressure	psi	2,175	2,175	2,175	2,175	2,175
Oil flow rate (rotation)	gpm	-	6.6	6.6	6.6	6.6
Maximum operating pressure (rotation)	psi	-	4,640	4,640	4,640	4,640

¹⁾Weights apply to standard carriers only. Any variances must be agreed with Epiroc and/or the carrier manufacturer prior to attachment.

²⁾Attachment with average-sized adapter plate.

³⁾Drainage line required



Our low-noise Hydraulic Compactors work quickly, are simple to operate and make positioning easy.

EC 40 T – EC 80 T

Hybrid technology

Integrated nitrogen piston accumulator for constantly high impact energy, safe start-up and smooth operation

VibroSilenced Plus

Non-metallic suspension arrangements to isolate percussion mechanism from breaker box and sealing of all openings for lower noise and vibration levels

Advanced control technology

The integrated control valve optimizes efficiency; the EnergyRecovery system increases operating efficiency and lowers vibrations

EC 90 T – EC 135 T

EC 140 T – EC 180 T

Monoblock design

Combined cylinder & tool holder section eliminating the need for tie rods for higher reliability; replaceable piston liner for cost-effective repairs

Percussion chamber ventilation

The built-in check valve reduces dust intake into the tool guiding area and the percussion chamber

StrokeControl valve

The combined stroke length and start-up mode switching valve enables the operator to adjust the breaker operation mode to the application for optimum performance

ContiLube™ II

Optional self-bleeding automatic lubrication device for optimized grease consumption and continuous lubrication

Field replaceable bushing

Full length floating tool bushing for quick exchange with standard hand tools

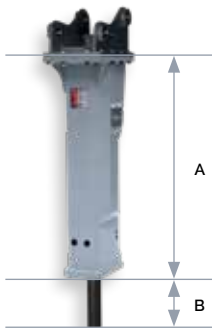
Technical data

	Carrier weight class ¹	Service weight ²	Tool diameter	Max. hydraulic input	Oil flow	Operating pressure	Impact rate (AutoStart mode)	Impact rate (AutoStop mode)	Sound power level ³	A	B
	lbs	lbs	in	hp	gpm	psi	bpm	bpm	dB(A)	in	in
EC 40 T	2,000-6,500	210	1.65	10	4-9	1,595-1,885	560-1,600	-	109	27.7	10.0
EC 50 T	4,500-10,000	330	2.05	16	8-13	1,595-2,030	670-1,500	-	111	32.9	11.0
EC 60 T	6,500-13,000	470	2.44	19	9-16	1,595-2,030	520-1,300	-	113	35.6	12.6
EC 70 T	9,000-20,000	610	2.76	23	12-20	1,595-2,030	530-1,200	-	114	38.3	14.4
EC 80 T	11,000-26,500	820	3.15	30	16-24	1,740-2,175	530-1,000	-	115	43.2	16.9
EC 90 T	20,000-33,000	1,400	3.54	37	21-29	1,885-2,175	600-950	-	116	47.8	17.9
EC 100 T	26,500-42,000	1,750	3.94	46	26-32	2,175-2,465	-	650-850	118	57.6	20.5
EC 120 T	33,000-53,000	2,650	4.72	53	32-37	2,175-2,465	-	550-720	121	62.7	24.6
EC 135 T	37,500-61,500	3,300	5.31	61	37-42	2,175-2,465	-	520-680	122	66.9	25.2
EC 140 T	44,000-73,000	3,950	5.51	68	34-48	2,175-2,465	400-800	380-650	120	70.8	24.4
EC 150 T	55,000-88,000	4,900	5.91	76	40-53	2,175-2,465	450-800	380-620	120	76.1	25.0
EC 155 T	66,000-99,000	5,700	6.10	89	48-58	2,320-2,610	530-800	380-590	122	79.5	25.8
EC 165 T	77,000-121,000	6,600	6.50	109	58-71	2,320-2,610	540-800	380-580	123	86.5	27.2
EC 180 T	99,000-154,000	9,250	7.09	129	66-85	2,320-2,610	550-800	380-570	123	92.5	30.1

¹ Weights apply to standard carriers only. Any variances must be agreed with Epiroc and/or the carrier manufacturer prior to attachment.

² Breaker and breaker box with standard adapter plus working tool.

³ Sound power level guaranteed. Important: EN ISO 3744 in accordance with directive 2000/14/EC. Full details of measurement are available in the Safety and Operating instruction of the product. It can be found on www.podshop.se/epiroc



Features and benefits

	Hybrid technology	Vibro-Silenced Plus	Energy recovery system	Internal control valve	Monoblock design	Floating bushing	Single retainer pin	Double tool retainer bars	Percussion chamber ventilation	Stroke Control Valve	ContiLube II
EC 40 T	●	●	●	●	●	●	●				
EC 50 T	●	●	●	●	●	●	●				
EC 60 T	●	●	●	●	●	●	●				
EC 70 T	●	●	●	●	●	●	●				
EC 80 T	●	●	●	●	●	●	●				
EC 90 T	●	●	●	●	●	●		●	●		●
EC 100 T	●	●	●	●	●			●	●		●
EC 120 T	●	●	●	●	●			●	●		●
EC 135 T	●	●	●	●	●			●	●		●
EC 140 T	●	●	●	●				●	●	●	●
EC 150 T	●	●	●	●				●	●	●	●
EC 155 T	●	●	●	●				●	●	●	●
EC 165 T	●	●	●	●				●	●	●	●
EC 180 T	●	●	●	●				●	●	●	●

● - Standard

Technical specifications

Technical data		ES 60	ES 70	ES 80
Carrier weight class ¹	lbs	6,500-13,000	9,000-20,000	11,000-26,500
Service weight ²	lbs	470	650	830
Tool diameter	in	2.44	2.76	3.15
Maximum hydraulic input	hp	19	23	30
Oil flow rate	gpm	9-16	12-20	16-24
Operating pressure	psi	1,595-2,030	1,595-2,030	1,740-2,175
Impact rate	bpm	520-1,300	530-1,200	530-1,000
A	in	30.9	33.5	36.5
B	in	14.2	16.1	18.7

¹ Weights apply to standard carriers only. Any variances must be agreed with Epiroc and/or the carrier manufacturer prior to attachment.

² Breaker and breaker box with standard adapter plus working tool.



Solid Body concept

A solid block of special casted material eliminates the need for a separate guiding system and reduces the total number of parts compared to conventional hydraulic breakers

Hybrid technology

Integrated nitrogen piston accumulator for constantly high impact energy, safe start-up and smooth operation

Advanced control technology

The integrated control valve optimizes efficiency; the EnergyRecovery system increases operating efficiency and lowers vibrations

Field replaceable bushing

Full length floating tool bushing for quick exchange with standard hand tools

United in performance. Inspired by innovation.

Performance unites us, innovation inspires us, and commitment drives us to keep moving forward. Count on Epiroc to deliver the solutions you need to succeed today and the technology to lead tomorrow.
epiroc.com

